

# Show Me The Evidence!

## Librarian-Supported Collaborative Work Groups for Healthcare Improvement

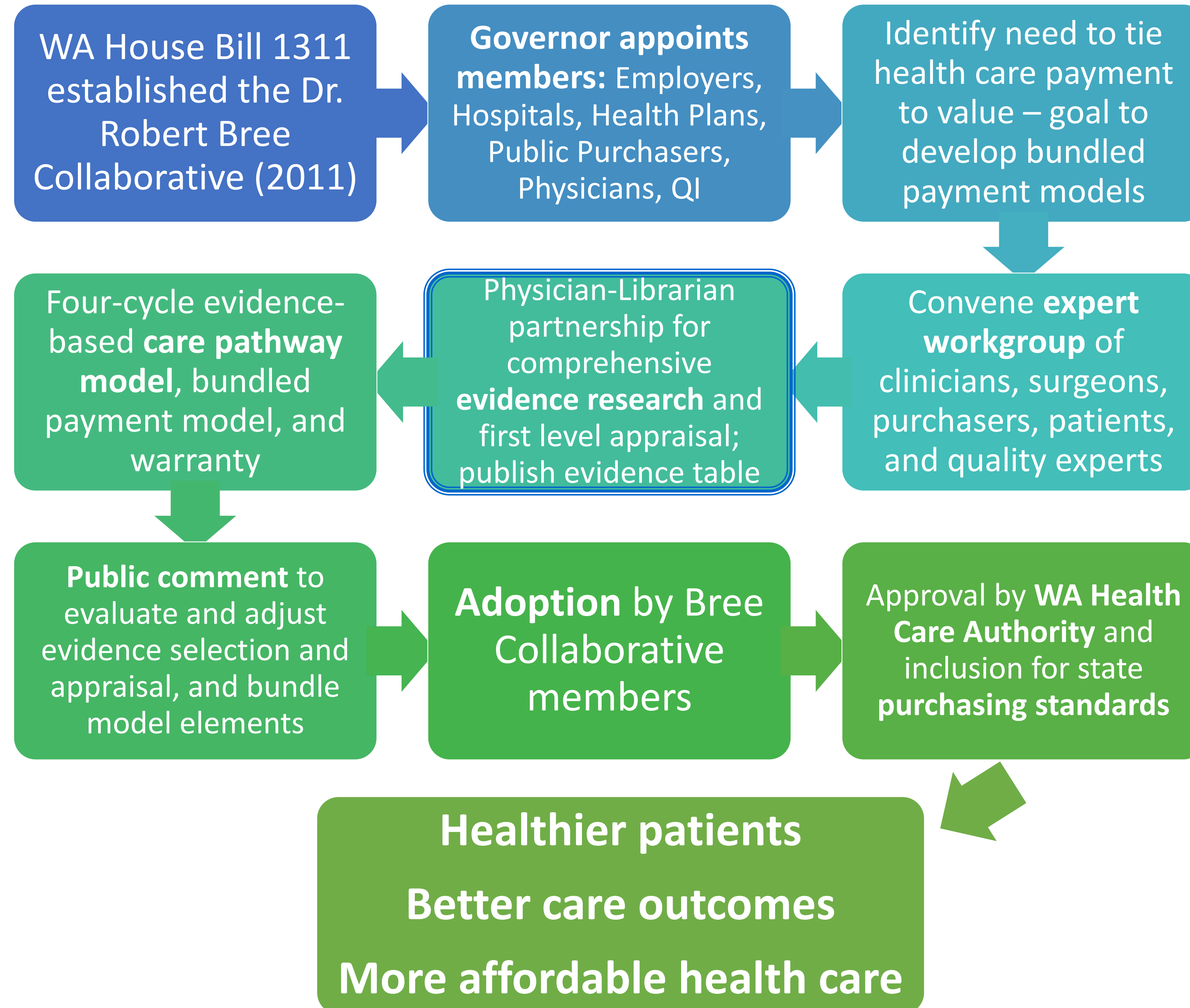


Mary Beth McAteer, MLIS, Librarian, Virginia Mason Medical Center and  
Ginny Weir, MPH, Program Director, Dr. Robert Bree Collaborative



### **BACKGROUND**

- **Established** in **2011** by the Washington State Legislature to give our community the opportunity to improve health care quality, outcomes, and affordability in Washington State.
- **Identify** three health care services with high **variation** in care delivery, **high cost and poor outcomes**, or patient **safety** issues annually.
- Focused on creating **bundled payment models** to tie payment to an entire episode of care including potential complications resulting from poor care.
- Form **multidisciplinary, expert workgroups** with clinicians, health plans, quality improvement experts, community groups, patients, and others.



### **What is a Bundled Payment?**

Bundled payment models make one payment for an entire health care service or episode, like a knee replacement. All the separate parts of the service – including pre-operative and post-operative care – are included.

### **OUTCOMES and BENEFITS**

- Four-cycle **bundled payment model, quality metrics**, and a **warranty** includes:
  - Appropriateness standards to make sure surgery is actually needed and that patients are fit for surgery.
  - Best practice recommendations for conservative care and surgeries.
  - Post-operative care and return to function.
  - Warranty against readmission for specific complications
- **Adopted Bundles:**
  - Total Knee and Total Hip Replacement
  - Lumbar Fusion Surgery
  - Coronary Artery Bypass Graft Surgery
  - Bariatric Surgery (in public comment stage)